



TYPICAL

GK0056 SERIES

HIGH SPEED CHAINSTITCHER MACHINE

INSTRUCTION BOOK
PARTS CATALOGUE

XI'AN TYPICAL INDUSTRIES CO.,LTD.

1. Pre – start checks

1. The machine shall not be started running until the completion of oiling.
2. The rotating direction of the balance wheel, when the machine is started running, shall be in counter clockwise one. (View from the right side of the balance wheel.) A warning shall be given in advance against making the machine run while balance wheel turning clockwise.
3. The machine shall be under operation at less than 2, 500 s. p. m, for the first month.
4. Check power source, voltage and phase number to see whether they are in accordance with the ratings on the name plate of the motor to be used.

2. Operating instructions

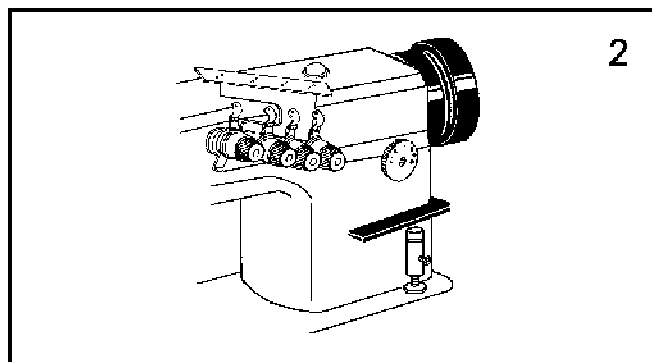
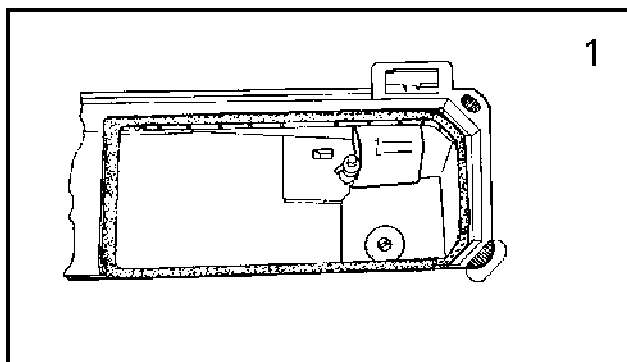
1. Do not put your hands under the lower part of the needle when the machine is running.
2. Do not put your fingers into the thread take – up lever cover when the machine is running
3. Only when the machine stops can you turn the balance wheel by hand.
4. After the motor switch being turned off, due to inertia , the motor will continue to rotate for a while, Be careful not to have the machine tilted unless it stops.
5. Do not make anything such as finger and hair near the balance wheel, V – belt and the motor.
6. Do not start running the machine during mounting or replacing the belt cover, finger guard, etc.

3. Specification

| | |
|--------------------------------|---|
| Stitch type | Double – row chain stitch |
| Speed | Max. 4, 000 s. p. m. |
| Needle | TVx7 9# – 21# or GKx2 9# – 21# |
| Stitch length | 1.4 – 5mm (0056 – 3, 1.4 – 4mm) |
| Stroke of needle bar | 31 . 8mm |
| Gaugas of double – row | 1/8" 5/32" 3/16" 7/32" 1/4" 5/16" 3/8" 1/2" chain stitch |
| Thread take – up type | Needle bar thread take up type |
| Looper | Separately adjustable type, for the range of 1/8" to 1/2" |
| Needle guard | Oscillating type and rigid type |
| Light clearance of knee lifter | 10mm |
| Oil supply | Impeller – type pump |
| Lubricating oil | 18# sewing machine oil |

4. Oil filling (Fig. 1 and 2)

1. Replenish the oil reservoir with oil and make the oil surface near to the mark "H".
2. If the oil amount level is under the mark "L", replenish the oil reservoir with oil in time.
3. The normal condition of lubrication is that the oil shall spray onto the oil sight. The amount of oil spraying onto the oil sight is not at all proportional to the total amount of oil in the oil reservoir. There is nothing to worry about.
4. When filling oil, loosen the oil draining screw, drain off the remaining oil in the oil reservoir completely. After tighten the oil draining screw, fill the oil reservoir with fresh oil.
5. When a new model or those standing idle for long time are to be operated, presser foot shall be lifted and run idle for about ten minutes.



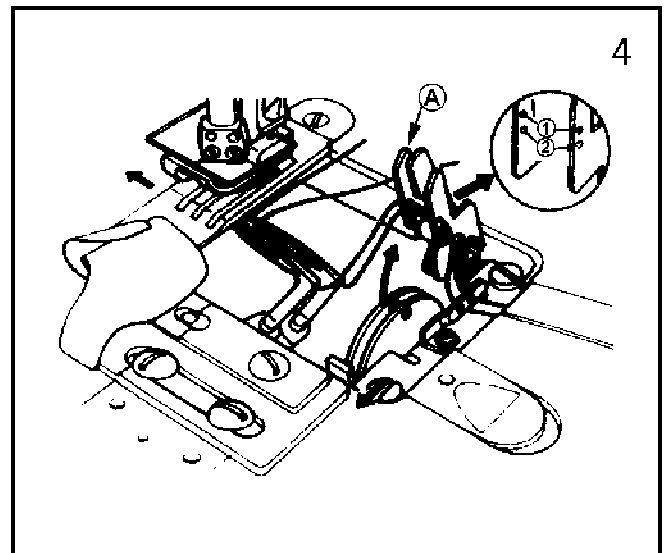
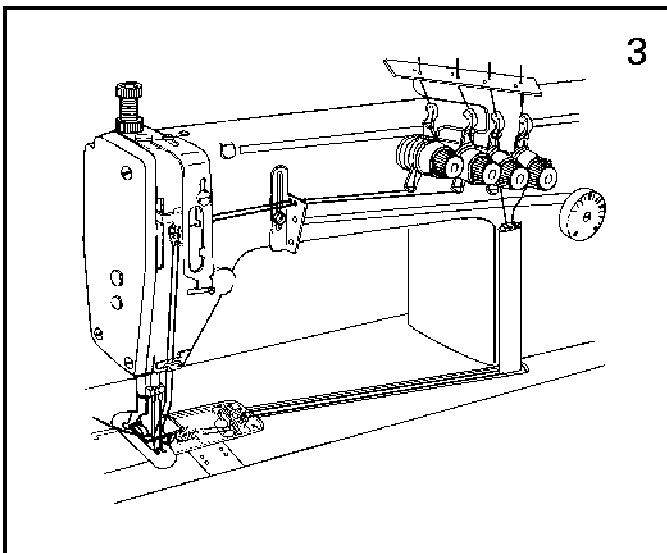
5. Threading (Fig. 3 and 4)

Threading bobbin thread first. To make bobbin thread go through the eye of the needle in the order as shown in.

1. Make the bobbin thread go through the tension guide plate, go through the two holes when thread of harder twist fiber is used or feed gauge is wider than usual.
2. Pull the spring toward the operator, as shown in Fig. 4 and part A will rise upwards.
3. When threading the looper, the thread shall be made go through the eye of the needle with a tweezer as shown in Fig. 4 and 50mm of remaining thread be pulled out.

To thread the needle thread, raise the needle bar to the upper end of its stroke, lead the thread go through the eyes of the needle in the order as shown in Fig. 3

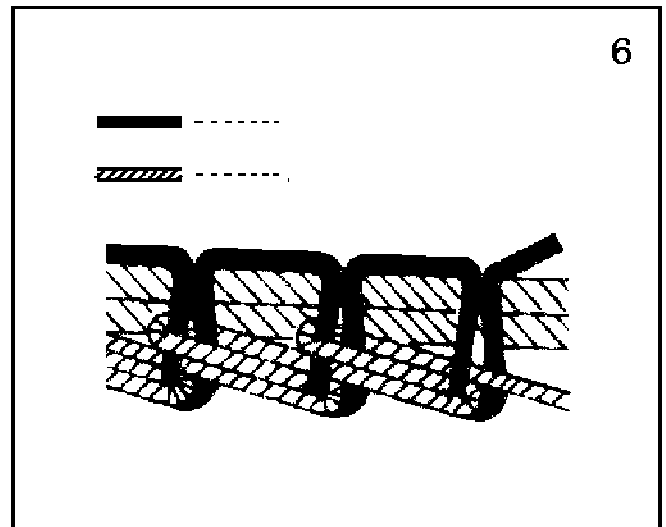
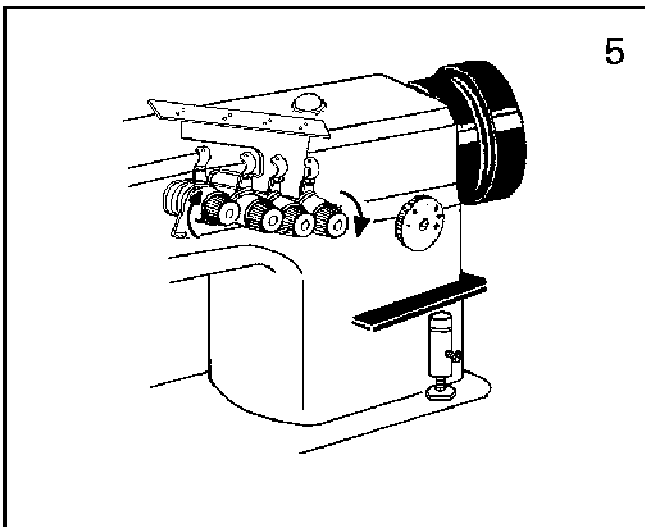
1. To make thread go through the eye of the needle outwards. (View from the operator's side)
2. To pull out 100mm of the remaining thread after needle thread going through the eyes of the needle.



6. Adjustment of the thread tension (Fig. 5 and 6)

To adjust needle thread tension in accordance with sewing working condition, we can adjust needle thread tension by tension spring. Turn the tension nut clockwise to increase the tension; turn counter-clockwise to decrease the tension.

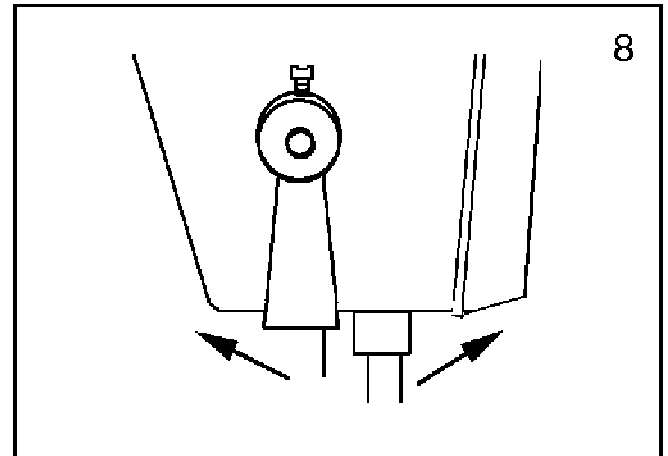
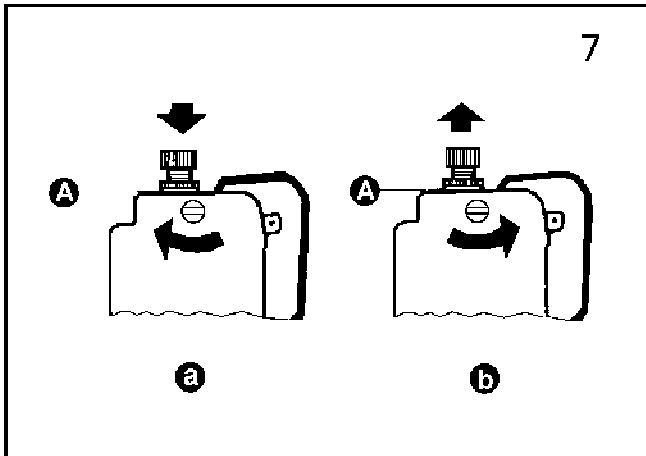
The relation between the needle thread and the bobbin thread as shown in (Fig6) depicts the forming of chain stitch.



7. Adjustment of pressure on presser foot (Fig. 7 and 8)

Turn pressure regulating thumb screw clockwise to increase the pressure; turn pressure regulating thumb screw counter-clockwise to decrease the pressure. For general fabric the standard height of pressure regulating thumb screw is about 27 – 30mm.

The presser bar lifter shall be turned either leftward or rightward in order to keep the presser foot under the condition of lifting position. (Fig. 8)



8. To adjust stitch length (Fig. 9)

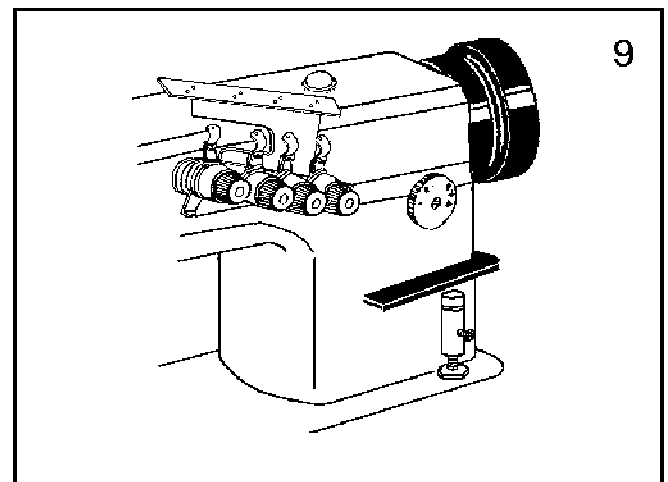
1. Turn stitch length dial to the desired number. The calibration is shown in millimeter (mm)

2. If you intend to decrease the stitch length, press down the reverse feed lever while turning the feed regulating dial.

3. Max. stitch length is 5 (0056 – 3, 4mm); Min. stitch length is 1.4mm.

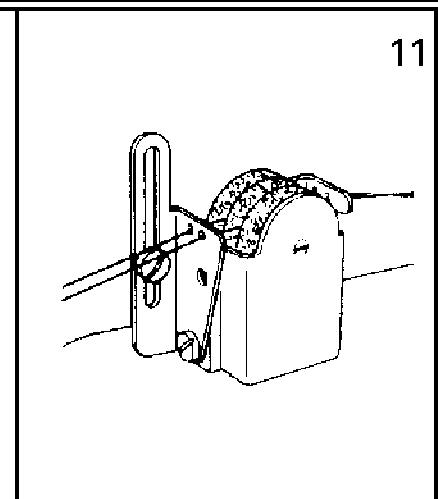
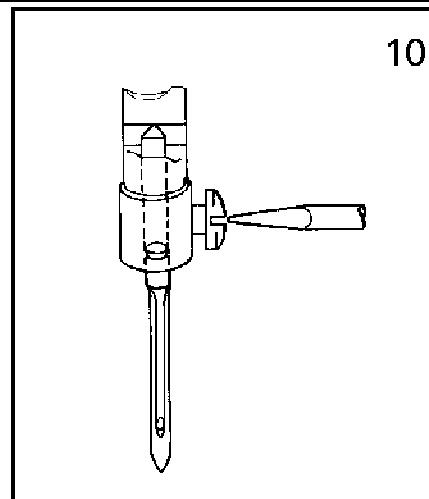
4. This version of stitch is suitable for beginning and end seaming or bar tacking.

Caution: The machine can not make reverse stitching.



9. Setting – up of the needle (Fig. 10 and 11)

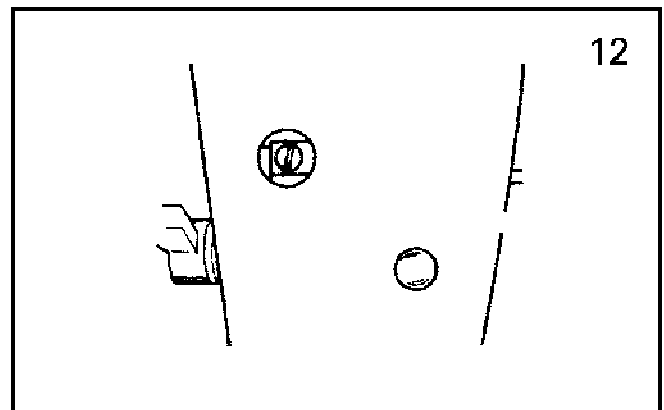
The direction of the needle eye should be in that direction, as shown in Fig. 10. Needle types to be desired fall within the range of # 9 to #21 of TV 7 or GK 2. Oil tank shall be custom – made when thread of chemical fibre is used; silicone oil can be placed like that, as indicated in Fig. 11.



10. Adjustment of the height of the presser bar (Fig. 12)

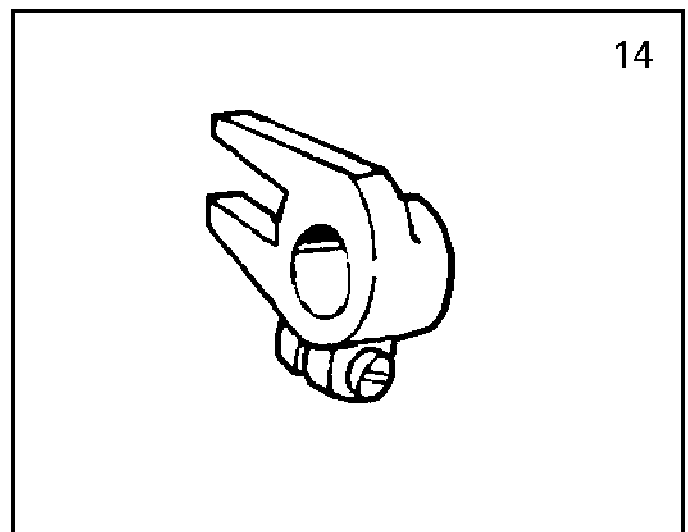
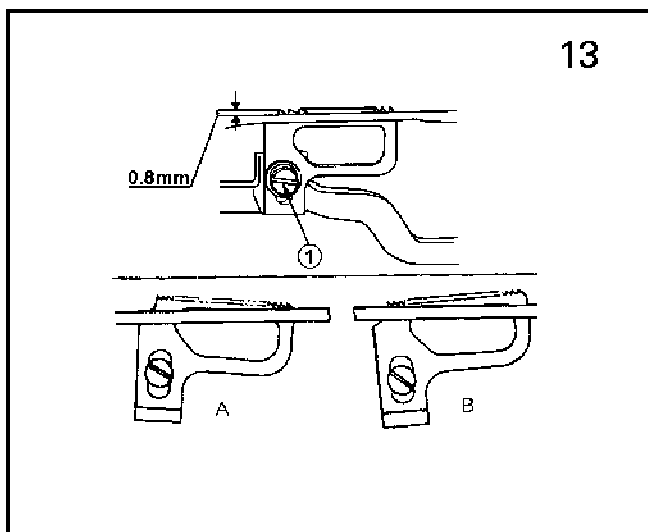
For the requirements of either replacing the presser foot, or changing the height and angle of presser foot the following shall be observed.

1. take off the rubber plug from the face plate.
2. Loosen the presser bar guide bracket set screw.
3. After adjusting, retighten the screw.



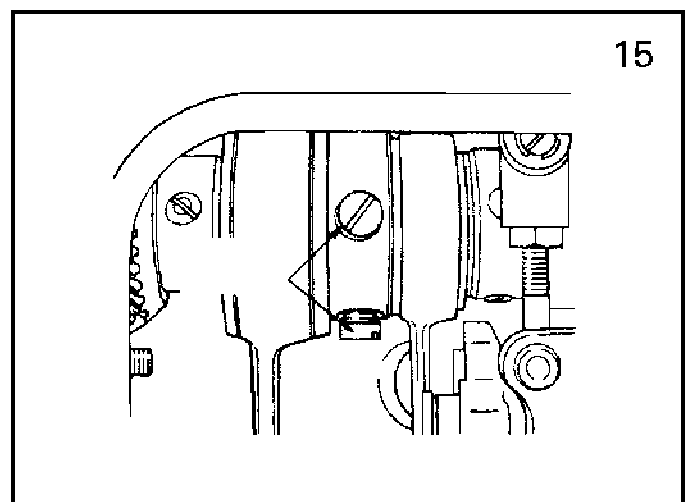
11. Adjustment of the height of the feed dog (Fig. 13 and 14)

Loosen the set screw, as shown in Fig. 14, the angle of the feed dog can be adjusted to the specified one of standard version, A version and B version. The Max. height of the projection from feed dog is 0.8mm and is adjustable by the adjusting of screw 1 as shown in fig. 13.



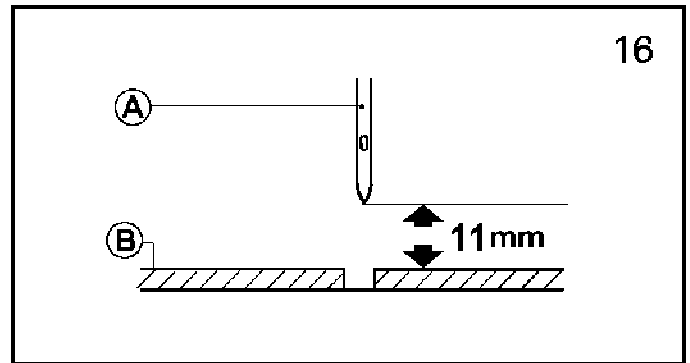
12. The timing of feed dog and needle (Fig. 15)

When the point of needle lowering down to the location of 3mm from the upper surface of the throat plate, the feed dog is right below the upper surface of the throat plate, viz. the running of feed dog being well regulated in relation to motion of needle.



13. Adjustment of the height of needle bar(Fig. 16)

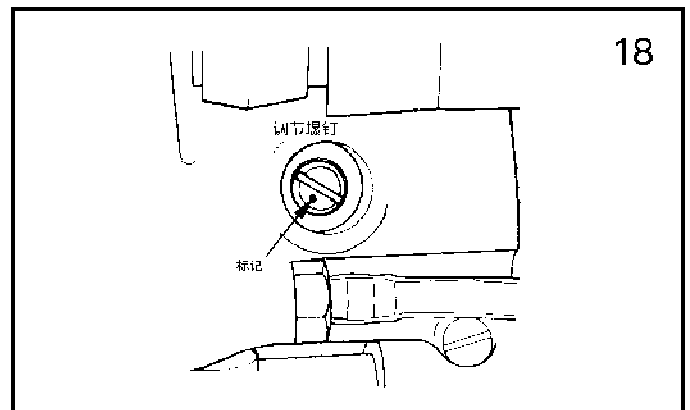
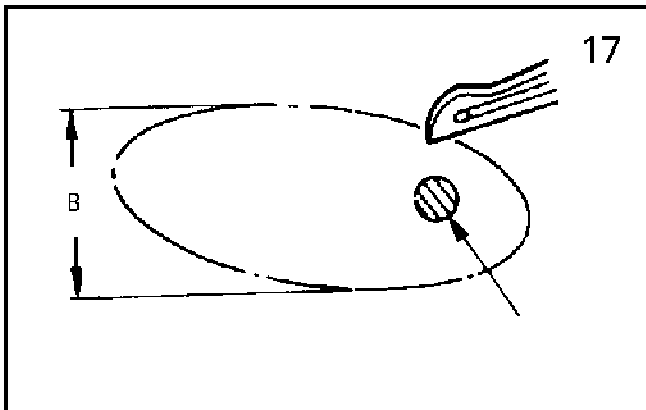
The distance from the point of needle to the upper surface of the throat plate should be 11 mm, as the needle bar at the top dead centre.



14. Adjustment of the needle and looper(Fig. 17 and 18)

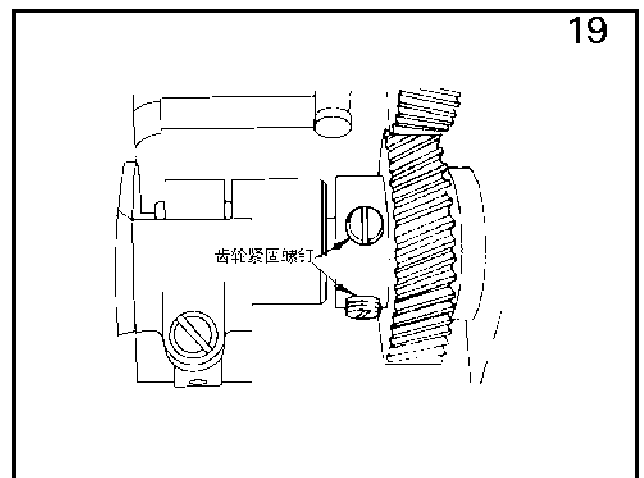
Adjustment of forward & backward motion of the looper: The dimension of part B of the looper in an elliptic motion can be measured by adjusting proceeding as follows(refer to Fig. 17). The Max. dimension of part B is usually 3.7mm, which is suitable for all kinds of needle.

1. Take off the rubber plug on the crank cover of the looper (refer to Fig. 18).
2. Turn the balance wheel by hand.
3. First loosen set screw and positioning screw, and then adjust marked screw.
4. The dimension of part B will be increased when turn clockwise the adjustable screw on which punch mark is printed.
5. Tighten set screw and positioning screw.



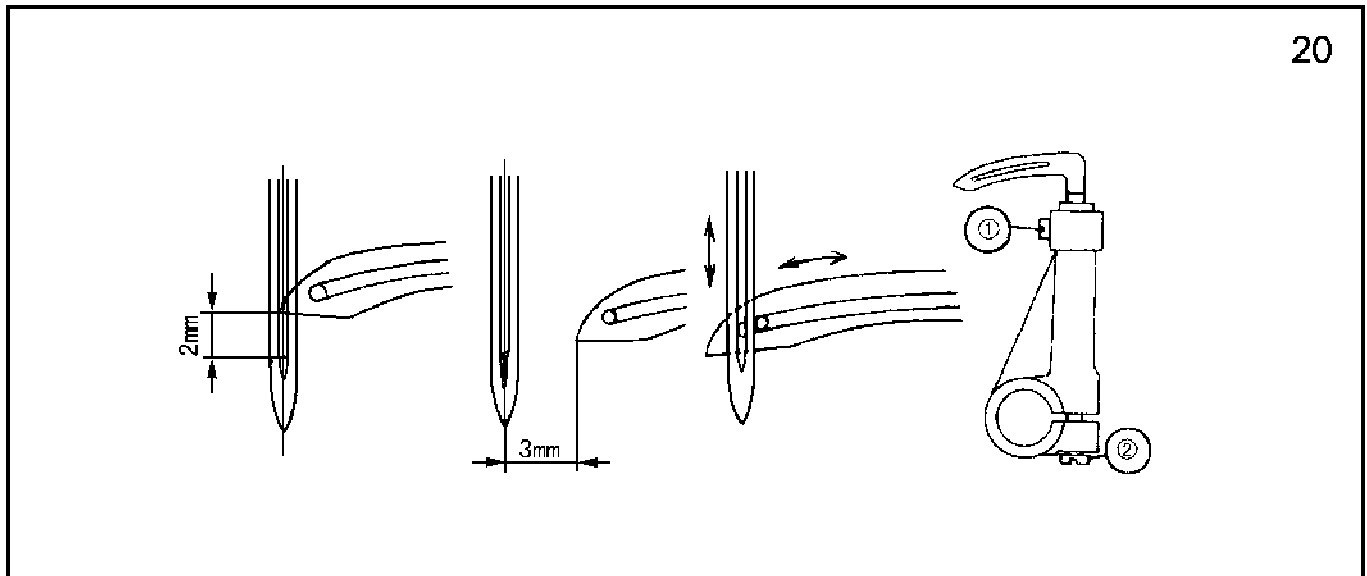
15. The timing of looper in reference to needle(Fig. 19)

The looper shall be moved backward to the rightmost position while the needle is at the bottom dead centre; loosen the screw on the gear and make timing adjustment of the looper in relation to the needle.



16. Threading –guiding amount of the looper(Fig. 20)

1. the standard value of the vertical distance of the point of the looper away from the upper end of the eye of the needle is 2mm.
2. The value of the stroke moved backward by the looper is about 3.0mm.
3. The relation between the eye of the needle and the eye of the looper is indicated in Fig. 17 (the left looper and the right one can be separately adjusted)

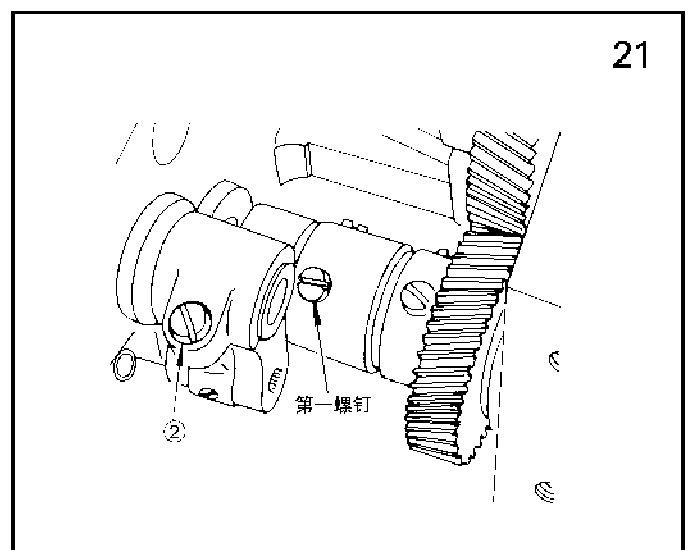


17. The clearance of looper and needle

After adjusting the needle guard, there should be a certain clearance between the needle and the looper. The needle should not touch the point of the looper when it is pressed down softly. If the clearance is narrower than usual, the side of the needle and the point of the looper are apt to incur breakage due to they impact each other.

18. The timing of needle guard(Fig. 21)

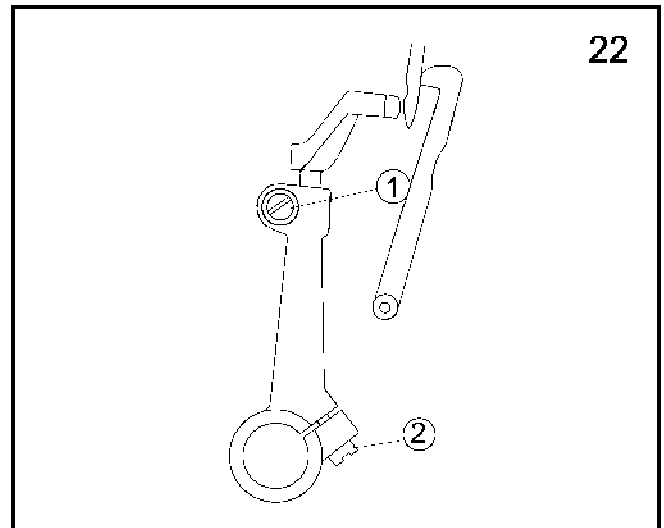
the timing of the needle guard depends on the condition of the plane on the rock shaft of the looper when no.1 screw(shown in Fig.21) has been screwed into this rock shaft.



19. Position of needle guard (Fig. 22)

Oscillating the needle guard to make the needle tip contact with needle gauge slightly, it is recommended that the height adjustment shall not fall within the range of the fixing needle guard; the adjustment can be made by loosening screws 1 and 2.

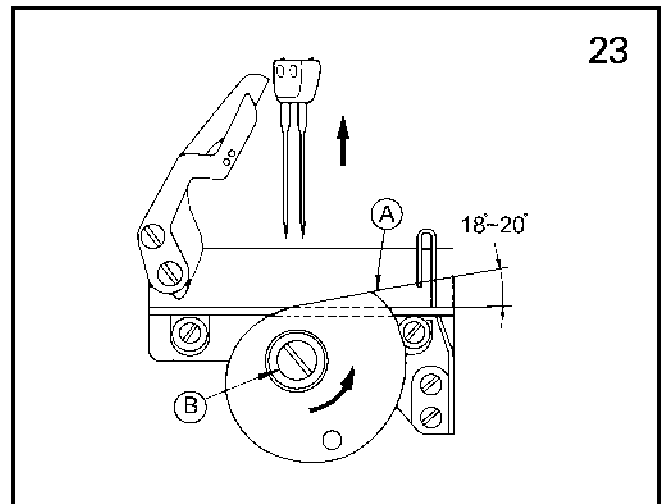
The relation between fixing needle guard and the driving needle guard is as represented in Fig. 22; the clearance from the needle falls within the range of 0.1 to 0.2mm.



20. Looper thread take – up cam (Fig. 23)

Its position can be seen as shown in Fig. 23. when the needle bar is at the top dead center, the angle between the planes of the cam and the steel wire is 18 – 20 degrees. First loosen screw B, and then make adjustment, finally tighten the screw firmly.

Pay close attention to the following: the needle tip shall entirely come into the thread loop of the looper when the bobbin thread rejecting from the projecting part of the cam.

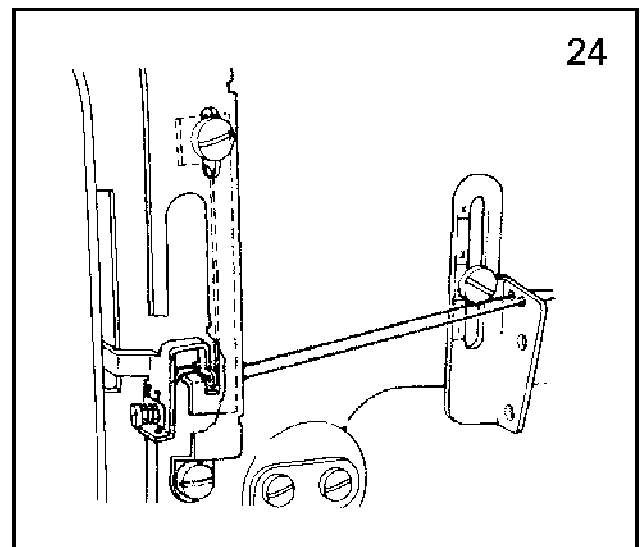


21. The position of the take – up thread tension lever (Fig. 24)

Make the take – up thread tension lever cover the face plate when the needle bar is at the bottom dead centre; in such way the loop of the needle thread is to become bigger when the needle thread is hooked.

In addition to the foregoing there is a function that it tightens the needle thread loop. The take – up thread tension lever usually reduces to the lowest point when a thread thinner than normal is used.

The improper – position of the frame thread

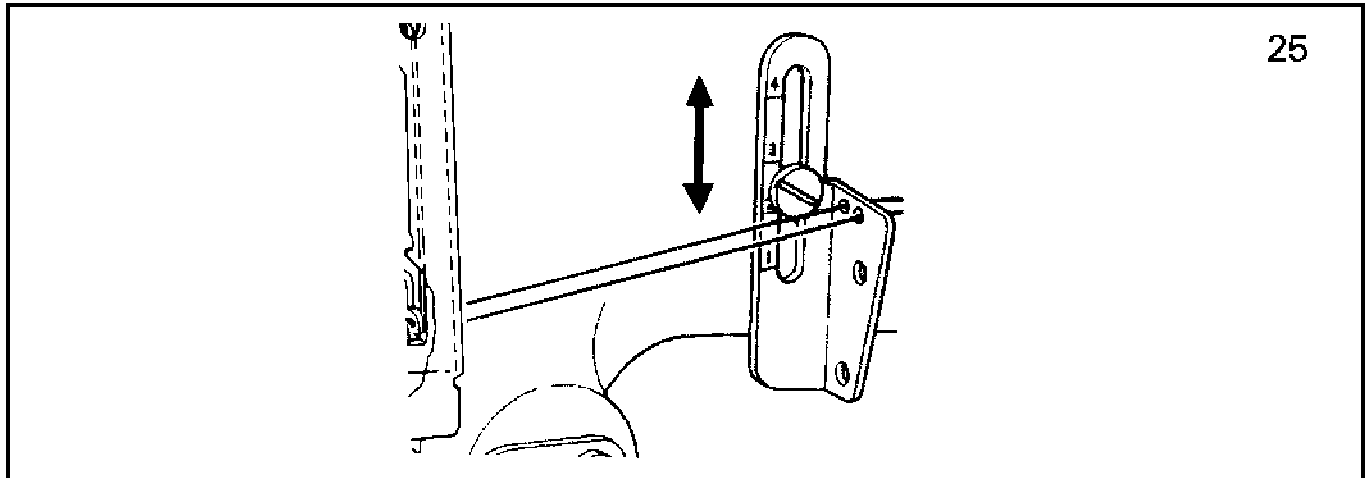


22. Frame thread eyelet (Fig. 25)

eyelet may be the cause of skipping stitch.

The following locations are generally regarded as criteria (Fig. 25)

| | |
|------------------------------------|--|
| Cotton thread 80# - 50# | Graduation marked on the frame thread eyelet 2 - 3 |
| Cotton thread 30# - 50# | Graduation marked on the frame thread eyelet 3 - 4 |
| Thread of chemical fibre 80# - 50# | Graduation marked on the frame thread eyelet 1 - 2 |
| Thread of chemical fibre 30# - 20# | Graduation marked on the frame thread eyelet 2 - 3 |



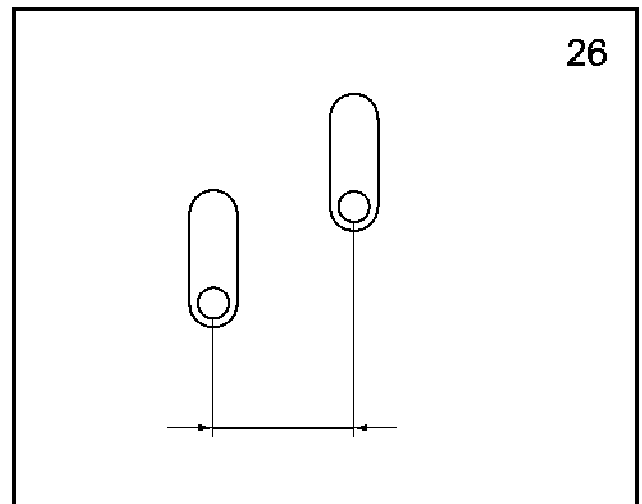
23. Replacement of throat plate (Fig. 26)

The standard size of the throat plate in parts book, which is stipulated by the manufactory, is $1/4$ " , equivalent to 6.4mm.

The replacement of the following components is usually needed when changing the gauge of double-row thread stitch.

1. needle clamp.
2. Presser foot.
3. Throat plate.
4. feed dog.
5. Rear driving needle guard.
6. folder.

The left and right loopers within the range of the sizes from $1/8$ " to $1/2$ " are interchangeable. In addition to the aforesaid, the replacement of left and right slide plate and cam cover shall be made when the width of throat plate is on the increase.



24. Maintenance of the machine

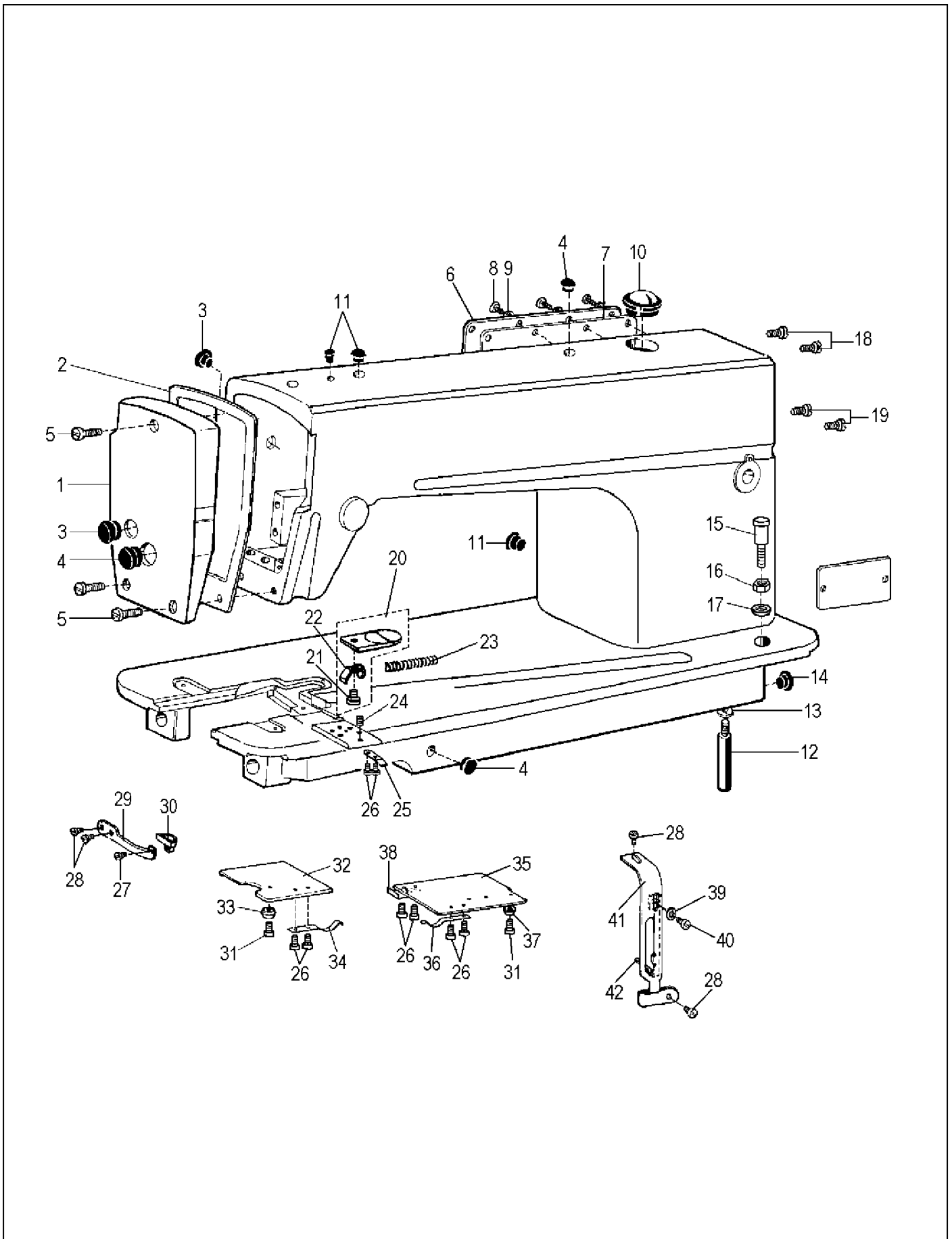
The following shall be adhered to in order to keep the machine in good working condition:

1. Daily checking.
 - (1) The oil shall spray onto the oil sight when the machine is running.
 - (2) Stop the machine when abnormal sound is heard during the operation of the machine.
2. Locations to be checked once a week.
 - (1) To take off throat plate, left and right slide plate to clean dust of the slot feed dog with a brush.
 - (2) To turn over the head to rid of oil stain and dust of both the oil filter screen on the oil pump and the interior of the oil reservoir.
 - (3) Loosen drain hole screw and take it off, drain all the dirty oil from the oil reservoir and reoil it.
 - (4) Oil level must be above the lowest oil-lever-indicating line marker "L".
 - (5) The black powder, adhering to the magnet in the oil reservoir shall be wiped with sponge cloth.

25. Common breakdowns and measures of trouble shooting

| No. | Breakdown | Cause | Measures to be taken |
|-----|--------------------|--|--|
| 1 | Thread breakage | <ol style="list-style-type: none"> 1. Poor thread quality 2. Thread being too thick 3. Fusing thread due to high temperature of needle caused by machine's operation at high speed 4. Tension being too higher 5. Breakage of needle, looper, throat plate and needle guard at the location of thread guide 6. Failure to adjust thread amount | <ol style="list-style-type: none"> 1. Quality thread to be used 2. Replacement to be made by an appropriate thread 3. Silicone oil to be used or speed to be reduced 4. The tension nut be loosened 5. First grinding with oil stone and then polishing 6. Adjusting the take –up thread thread tension lever |
| 2 | Skipping stitch | <ol style="list-style-type: none"> 1. Skipping stitch of needle thread (leaking of two stitches due to the looper's failure to hook the needle thread) | <ol style="list-style-type: none"> 1. Adjusting thread –hooking amount of looper 2. Adjusting clearance between looper and needle 3. The timing of needle in reference to looper 4. Adjusting the take –up thread tension lever on thread amount changing conditions 5. Adjusting the frame thread eyelet 6. Checking whether the mounting position of the needle is proper or not 7. To see if the location of needle guard is an appropriate way and the timing of it is well regulated in relation to another 8. To see if the needle thread Threading is in proper way |
| | | <ol style="list-style-type: none"> 2. Skipping stitch of bobbin thread (leaking of one stitch, needle failure to enter the looper eyelet) | <ol style="list-style-type: none"> 1. Reference to the above cases 1 and 2, as to skipping stitch of the needle thread 2. To see if the timing of bobbin thread cam has been well regulated 3. Increasing the tension of bobbin thread a bit 4. To see if the threading of bobbin thread is in a correct way |
| | | <ol style="list-style-type: none"> 3. Skipping stitch when thread of chemical fibre being in use | <ol style="list-style-type: none"> 1. Using silicone oil 2. Reducing speed 3. Using needle for thread of chemical fibre |
| | | <ol style="list-style-type: none"> 4. Skipping stitch when thread of polyester fiber being in use | <ol style="list-style-type: none"> 1. Reducing speed 2. Silicone oil to be used |
| 3 | Twisted stitches | <ol style="list-style-type: none"> 1. Needle thread tension being too low 2. Bobbin thread tension being too low 3. Sewing thread being too thick 4. Improper position of the frame thread eyelet 5. Improper position of take –up thread tension lever 6. Throat plate | <ol style="list-style-type: none"> 1. Tightening tension not of needle thread 2. Tightening tension nut of bobbin thread 3. Large size needle to be used 4. Readjusting it to a proper position 5. Readjusting its position in an appropriate way 6. The eyelet of throat plate to be used being bigger than normal one |
| 4 | Breakage of needle | <ol style="list-style-type: none"> 1. Needle being bent 2. The problem of the timing of feed dog and needle 3. Wrong setting –up of the presser foot 4. The problem of the needle guard remaining unsolved 5. Needle thread tension being too high 6. Needle being too thick | <ol style="list-style-type: none"> 1. Needle to be replaced by another proper size one 2. Readjusting the timing to feed dog in reference to the needle 3. To make both center of the hole of the presser foot and the center of the eyelet of the throat plate be in line with that of the eye of the needle 4. The position and the timing of the needle guard to be taken into account 5. Relaxing needle thread 6. Appropriate needle to be used |
| 5 | Puckering | <ol style="list-style-type: none"> 1. Threading tension being too high 2. The problem of the timing of the bobbin thread cam for thread guiding failing to be solved 3. Improper polish of the parts on the thread guide 4. The force on the presser foot being too big | <ol style="list-style-type: none"> 1. Decreasing thread tension, esp. tension of bobbin thread 2. Readjusting of the very cam to solve the timing problem 3. Burnishing all the thread guide parts 4. Turning counter –clockwise the pressure –regulating screw |

1. ARM BED AND ITS ACCESSORIES



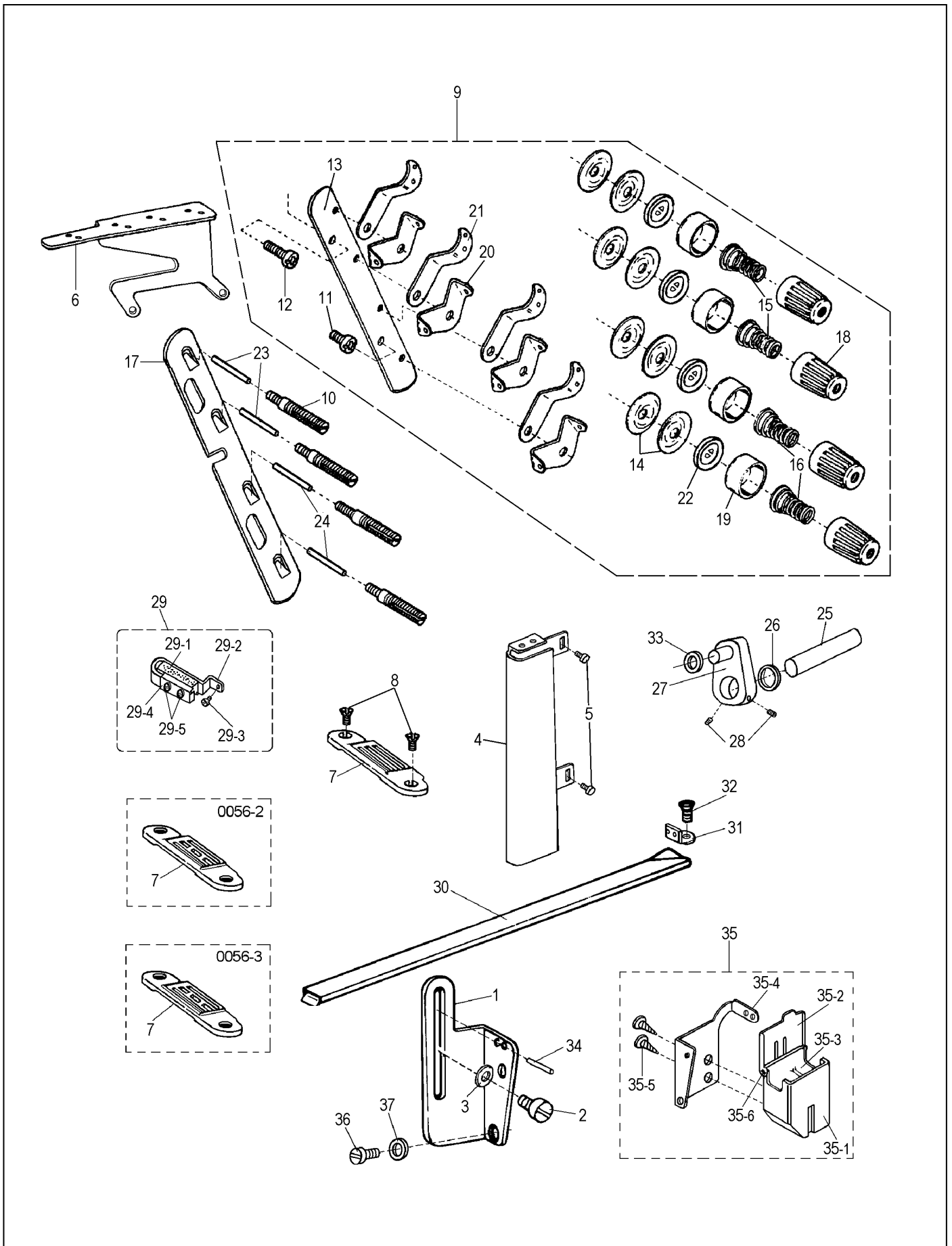
1. ARM BED AND ITS ACCESSORIES

| No. | Ref.No. | Description | Qt. | | |
|-----|----------------|-------------------------------|-----|-----|-----|
| | | | - 1 | - 2 | - 3 |
| 1 | 124120001 | Face plate | 1 | 1 | 1 |
| 2 | 124120002 | Face plate gasket | 1 | 1 | 1 |
| 3 | 022130003- - V | Rubber plug (φ 19) | 2 | 2 | 2 |
| 4 | 022130004- - V | Rubber plug (φ 11.8) | 3 | 3 | 3 |
| 5 | 022100004 | Screw | 3 | 3 | 3 |
| 6 | 022140001- - W | Side plate | 1 | 1 | 1 |
| 7 | 022140002 | Gasket | 1 | 1 | 1 |
| 8 | 022100006 | Screw | 8 | 8 | 8 |
| 9 | 022100007 | Washer | 8 | 8 | 8 |
| 10 | 022180001- - V | Oil check window | 1 | 1 | 1 |
| 11 | 022100015- - V | Rubber plug (φ 8.8) | 3 | 3 | 3 |
| 12 | 158100003 | Bed support | 2 | 2 | 2 |
| 13 | S150601004 | Spring washer 6 | 3 | 3 | 3 |
| 14 | 022100016- - 1 | Rubber plug (φ 27) | 1 | 1 | 1 |
| 15 | 158410001 | Guard plate | 1 | 1 | 1 |
| 16 | S150503005 | Nut | 1 | 1 | 1 |
| 17 | S150607004 | Washer 6 | 1 | 1 | 1 |
| 18 | 036550005 | Screw | 2 | 2 | 2 |
| 19 | 022820001 | Screw | 2 | 2 | 2 |
| 20 | 158H00004 | Right spanner | 1 | 1 | 1 |
| 21 | 158160002 | Screw | 1 | 1 | 1 |
| 22 | 158160003 | Spanner spring top plate | 1 | 1 | 1 |
| 23 | 158100002 | Spring | 1 | 1 | 1 |
| 24 | 022230005 | Set screw | 1 | 1 | 1 |
| 25 | 158170002 | Lock spring | 1 | 1 | 1 |
| 26 | 022170003 | Screw for slide plate spring | 8 | 8 | 8 |
| 27 | 028400068 | Screw | 1 | 1 | 1 |
| 28 | 0585A0003 | Screw | 4 | 4 | 4 |
| 29 | 158140002 | Plate spring | 1 | 1 | 1 |
| 30 | 158140001 | Left spanner | 1 | 1 | 1 |
| 31 | 028300034 | Screw | 2 | 2 | 2 |
| 32 | 158130001 | Left slide plate | 1 | 1 | 1 |
| | 158B70005 | Left slide plate (12.7mm) | 1 | 1 | 1 |
| 33 | 158130003 | Lockup collar | 1 | 1 | 1 |
| 34 | 158130002 | Plate spring | 1 | 1 | 1 |
| 35 | 158120001 | Right slide plate | 1 | 1 | 1 |
| | 158B50006 | Right slide plate (7.9 , 9.5) | 1 | | |
| | 158B70006 | Right slide plate (12.7) | 1 | | |
| 36 | 158120003 | Plate spring | 1 | 1 | 1 |
| 37 | 158120002 | Lockup collar | 1 | 1 | 1 |
| 38 | 158120004 | Plate spring | 1 | 1 | 1 |
| 39 | 022100007 | Washer | 1 | 1 | 1 |
| 40 | 022200004 | Screw M5x18 | 1 | 1 | 1 |
| 41 | 158150001 | Thread take- up lever cover | 1 | 1 | 1 |
| 42 | 158150002 | Thread take- up tension plate | 1 | 1 | 1 |

2. ARM SHAFT, NEEDLE BAR AND THREAD GUIDE MECHANISM (1)

| No. | Ref.No. | Description | Qt. | | |
|-----|----------------|-----------------------------|-----|-----|-----|
| | | | - 1 | - 2 | - 3 |
| 1 | 158200001 | Needle bar | 1 | | 1 |
| | 078200004 | Needle bar | | 1 | |
| 2 | 158200002 | Needle holder (6.4) | 1 | | |
| | 158B10003 | Needle holder (3.2) | 1 | | |
| | 158B20002 | Needle holder (4.0) | 1 | | |
| | 158B30002 | Needle holder (4.8) | 1 | | |
| | 158B40002 | Needle holder (5.6) | 1 | | |
| | 158B50003 | Needle holder (7.9) | 1 | | |
| | 158B60002 | Needle holder (9.5) | 1 | | |
| | 158B70003 | Needle holder (12.7) | 1 | | |
| | 158A00003 | Needle holder | | | 1 |
| 3 | 158200012 | Needle | 2 | 1 | 2 |
| 4 | 022230005 | Screw | 2 | | 2 |
| | 022200017 | Screw | | 1 | |
| 5 | 158200003 | Needle bar bushing (lower) | 1 | 1 | 1 |
| 6 | 158200004 | Needle bar bushing (upper) | 1 | 1 | 1 |
| 7 | 022200009 | Screw | 1 | 1 | 1 |
| 8 | 022200010 | Felt plug | 1 | 1 | 1 |
| 9 | 022200011- - V | Rubber plug | 1 | 1 | 1 |
| 10 | 158200005 | Oil guard plate | 1 | 1 | 1 |
| 11 | 028300038 | Screw | 1 | 1 | 1 |
| 12 | 022220001 | Needle crank | 1 | 1 | 1 |
| 13 | 022220002 | Screw | 1 | 1 | 1 |
| 14 | 022220003 | Set screw | 1 | 1 | 1 |
| 15 | 022200006 | Screw | 1 | 1 | 1 |
| 16 | 022200007 | Set screw | 1 | 1 | 1 |
| 17 | 158230000 | Needle bar link assy | 1 | 1 | 1 |
| 18 | 022210004 | Thread take- up crank | 1 | 1 | 1 |
| 19 | 022210006 | Screw (left hand thread) | 1 | 1 | 1 |
| 20 | 022212001 | Needle bar link | 1 | 1 | 1 |
| 21 | 022210008 | Needle rod joint | 1 | 1 | 1 |
| 22 | 022210009 | Screw | 1 | 1 | 1 |
| 23 | 158200014 | Washer | 1 | 1 | 1 |
| 24 | 022200018 | Slide block guide | 1 | 1 | 1 |
| 25 | 022200019 | Screw | 2 | 2 | 2 |
| 26 | 022200020 | Needle rod joint block | 1 | 1 | 1 |
| 27 | 158210000 | Thread take- up lever assy | 1 | 1 | 1 |
| 28 | 006200027 | Screw | 1 | 1 | 1 |
| 29 | 124310001 | Arm shaft | 1 | 1 | 1 |
| 30 | 022320001 | Collar | 1 | 1 | 1 |
| 31 | 022220003 | Screw | 2 | 2 | 2 |
| 32 | 022300003 | Left bushing of arm shaft | 1 | 1 | 1 |
| 33 | 108300005 | Right bushing of arm shaft | 2 | 2 | 2 |
| 34 | 124330002 | Oil seal | 1 | 1 | 1 |
| 35 | 124300003 | Balance wheel | 1 | 1 | 1 |
| 36 | 022330002 | Screw | 2 | 2 | 2 |
| 37 | 022300008 | Screw | 1 | 1 | 1 |
| 38 | 03634 | Feed eccentric cam assy | 1 | 1 | 1 |
| 39 | 036300003 | Feed eccentric cam | 1 | 1 | 1 |
| 40 | 020300007 | Screw | 2 | 2 | 2 |
| 41 | 036300004 | Guard plate | 1 | 1 | 1 |
| 42 | 165330001 | Screw | 3 | 3 | 3 |
| 43 | 022343001 | Feed lifting link | 1 | 1 | 1 |
| 44 | 022342001 | Stop collar | 1 | 1 | 1 |
| 45 | 158200009 | Middle bushing of arm shaft | 1 | 1 | 1 |
| 46 | 022310002 | Rubber plug (7.4× 10) | 1 | 1 | 1 |
| 47 | 022830004 | Screw | 2 | 2 | 2 |
| 48 | 048200004 | Thread guide | | 1 | |
| 49 | 0585A0003 | Screw | 1 | 1 | 1 |
| 50 | 036550002 | Cloth feeding rod | 1 | 1 | 1 |

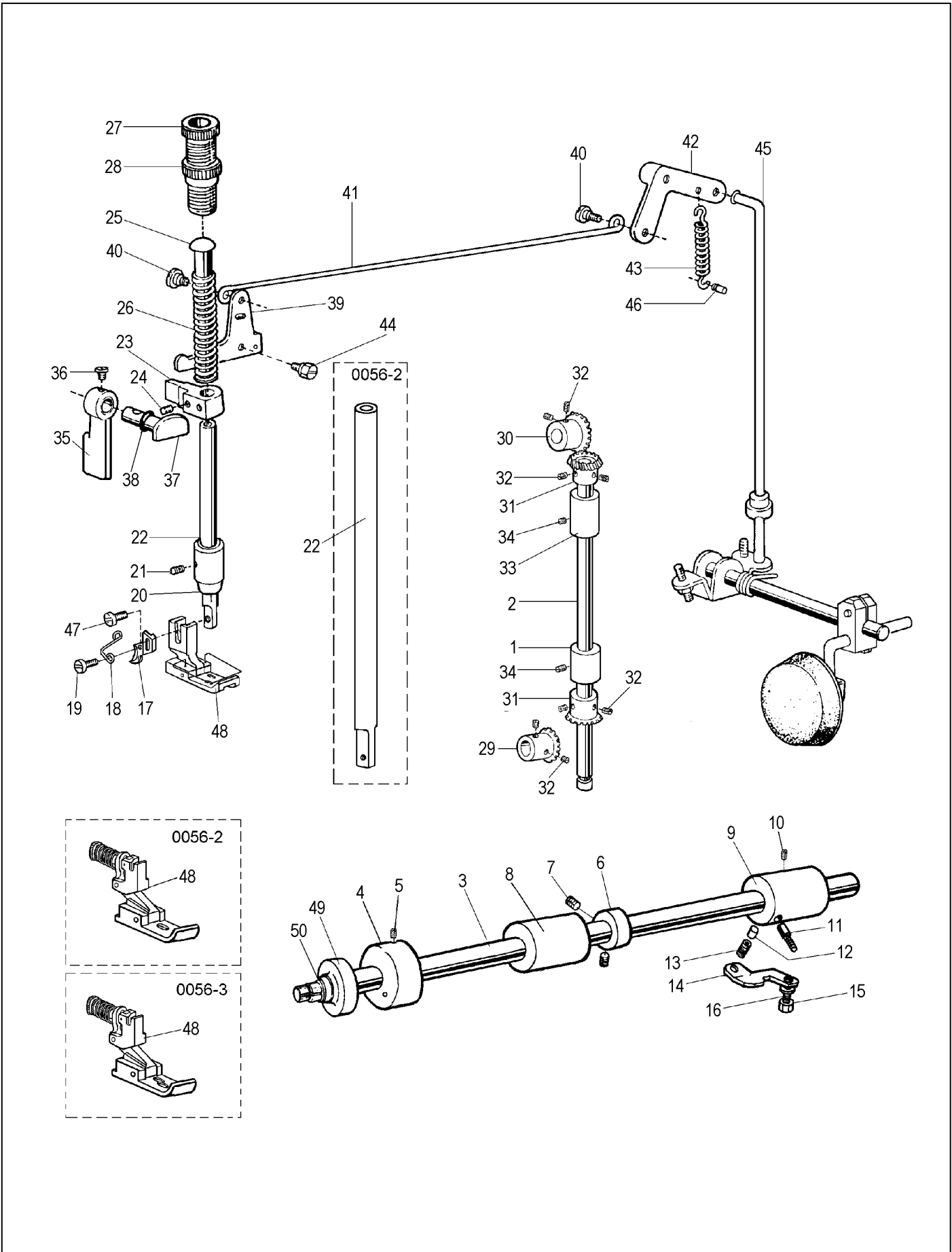
3. ARM SHAFT, NEEDLE BAR AND THREAD GUIDE MECHANISM (2)



3. ARM SHAFT, NEEDLE BAR AND THREAD GUIDE MECHANISM (2)

| No. | Ref.No. | Description | Qt. | | |
|-----|-----------|----------------------------------|-----|-----|-----|
| | | | - 1 | - 2 | - 3 |
| 1 | 158200006 | Thread guide | 1 | 1 | 1 |
| 2 | 0585A0003 | Screw | 1 | 1 | 1 |
| 3 | 022100007 | Washer | 2 | 2 | 2 |
| 4 | 158200007 | Bobbin guard plate | 1 | 1 | 1 |
| 5 | 0585A0003 | Screw | 2 | 2 | 2 |
| 6 | 158200008 | Main thread guide holder | 1 | 1 | 1 |
| 7 | 158200017 | Needle plate (6.4) | 1 | | |
| | 158B10001 | Needle plate (3.2) | | | |
| | 158B20001 | Needle plate (4.0) | | | |
| | 158B30001 | Needle plate (4.8) | | | |
| | 158B40001 | Needle plate (5.6) | | | |
| | 158B50005 | Needle plate (7.9) | | | |
| | 158B60004 | Needle plate (9.5) | | | |
| | 158B70007 | Needle plate (12.7) | | | |
| | 158900009 | Needle plate | | 1 | |
| | 158A00008 | Needle plate | | | 1 |
| 8 | 022100020 | Screw | 2 | 2 | 2 |
| 9 | 158H03000 | total line assy | 1 | 1 | 1 |
| 10 | 158220006 | Tension screw | 4 | 4 | 4 |
| 11 | 158220009 | Screw (short) | 1 | 1 | 1 |
| 12 | 028100063 | Screw (long) | 1 | 1 | 1 |
| 13 | 158220001 | Thread guide base | 1 | 1 | 1 |
| 14 | 022160005 | Tension disc | 8 | 8 | 8 |
| 15 | 028283001 | Tension spring | 2 | 2 | 2 |
| 16 | 028283002 | Tension spring | 2 | 2 | 2 |
| 17 | 158220002 | Thread tension plate | 1 | 1 | 1 |
| 18 | 028283005 | Tension nut | 4 | 4 | 4 |
| 19 | 028280002 | Tension base | 4 | 4 | 4 |
| 20 | 116200016 | Thread tension guide plate | 4 | 4 | 4 |
| 21 | 116200015 | Upper thread tension guide plate | 4 | 4 | 4 |
| 22 | 022160004 | Thread release plate | 4 | 4 | 4 |
| 23 | 158220008 | Pin | 2 | 2 | 2 |
| 24 | 158220010 | Pin (short) | 2 | 2 | 2 |
| 25 | 158220005 | Thread release shaft | 1 | 1 | 1 |
| 26 | 158220007 | O- ring | 1 | 1 | 1 |
| 27 | 158200015 | Tension crank | 1 | 1 | 1 |
| 28 | 022100011 | Screw | 2 | 2 | 2 |
| 29 | 158240000 | Thread tension assy | 1 | 1 | 1 |
| 30 | 022610004 | Screw | 1 | 1 | 1 |
| 31 | 028300034 | Set screw | 2 | 2 | 2 |
| 32 | 158H00005 | Thread guide slot | 1 | 1 | 1 |
| 33 | 158600024 | Bed thread guide plate | 1 | 1 | 1 |
| 34 | 022100020 | Screw | 1 | 1 | 1 |
| 35 | 158200016 | Rubber washer | 1 | 1 | 1 |
| 36 | 110100027 | Pin | 1 | 1 | 1 |
| 37 | 158830000 | Silicon oil pot | 1 | 1 | 1 |
| 38 | 022200004 | Screw | 1 | 1 | 1 |
| 39 | 022100007 | Washer | 1 | 1 | 1 |

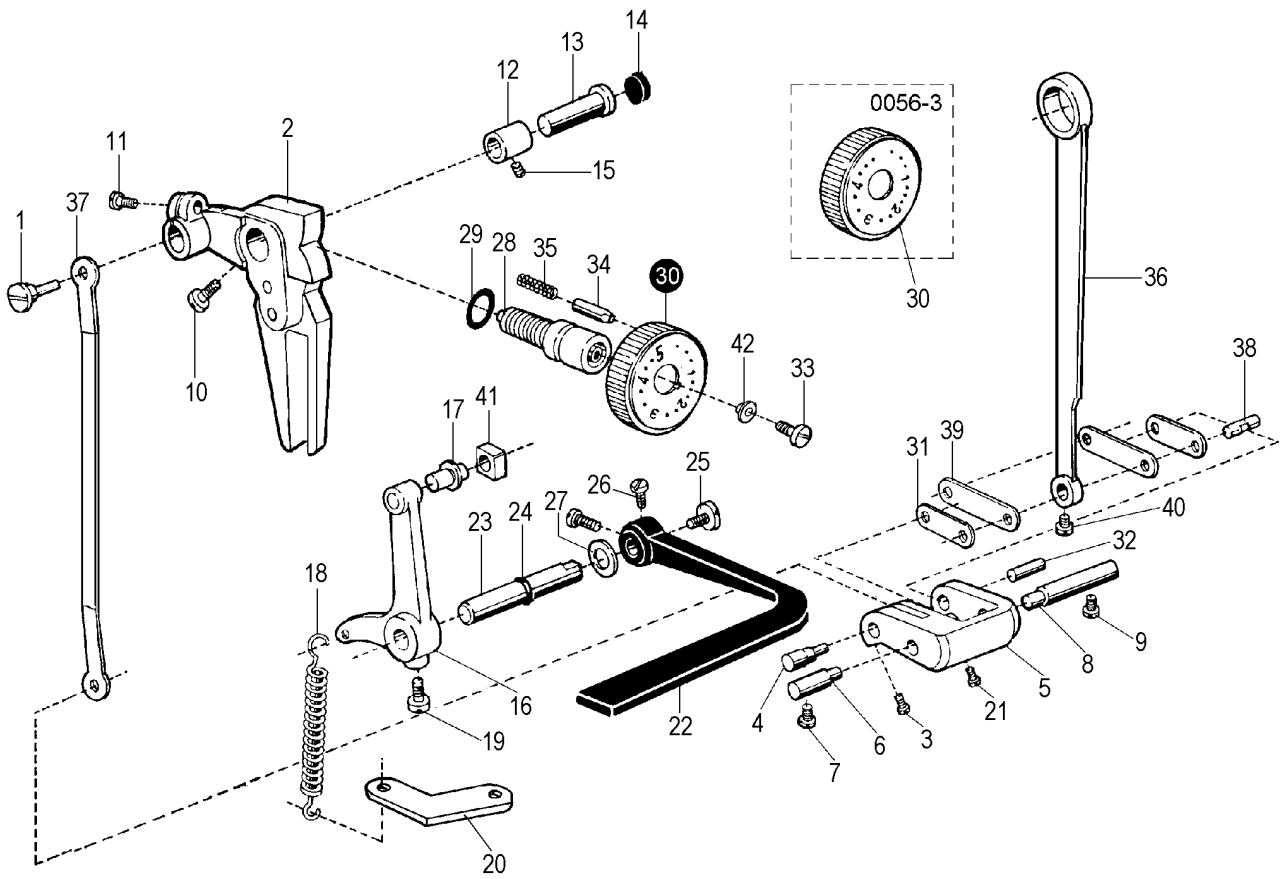
4. PRESSER BAR, VERTICAL SHAFT AND HOOK SHAFT MECHANISM



4. PRESSER BAR, VERTICAL SHAFT AND HOOK SHAFT MECHANISM

| No. | Ref.No. | Description | Qt. | | |
|-----|----------------|---------------------------------------|-----|-----|-----|
| | | | - 1 | - 2 | - 3 |
| 1 | 022300112 | Vertical shaft bushing (lower) | 1 | 1 | 1 |
| 2 | 158300002 | Vertical shaft | 1 | 1 | 1 |
| 3 | 158300003 | Hook shaft | 1 | 1 | 1 |
| 4 | 158300004 | Bushing (left) | 1 | 1 | 1 |
| 5 | 020300007 | Screw | 1 | 1 | 1 |
| 6 | 158300005 | Thrust collar | 1 | 1 | 1 |
| 7 | 022220003 | Screw | 2 | 2 | 2 |
| 8 | 158300006 | Bushing (middle) | 1 | 1 | 1 |
| 9 | 158300007 | Bushing (right) | 1 | 1 | 1 |
| 10 | 022200009 | Screw | 1 | 1 | 1 |
| 11 | 022430002 | Oil pipe | 1 | 1 | 1 |
| 12 | 036400015 | Plunger | 1 | 1 | 1 |
| 13 | 036400016 | Plunger spring | 1 | 1 | 1 |
| 14 | 158300008 | Guide plate | 1 | 1 | 1 |
| 15 | 022820001 | Screw | 1 | 1 | 1 |
| 16 | S150601004 | Spring washer | 1 | 1 | 1 |
| 17 | 158300010 | Cut knife | 1 | 1 | 1 |
| 18 | 158300011 | Guide plate | 1 | 1 | 1 |
| 19 | 028300034 | Screw | 1 | 1 | 1 |
| 20 | 022700009 | Bushing | 1 | 1 | 1 |
| 21 | 020300007 | Screw | 1 | 1 | 1 |
| 22 | 158300012 | Presser bar | 1 | | |
| | 158900006 | Presser bar | | 1 | 1 |
| 23 | 158300013 | Presser bar lifting bracket | 1 | 1 | 1 |
| 24 | 022200002 | Screw | 1 | 1 | 1 |
| 25 | 022700012 | Presser bar guide | 1 | 1 | 1 |
| 26 | 022700013 | Presser spring | 1 | 1 | 1 |
| 27 | 022750001- - W | Presser regulating thumb screw | 1 | 1 | 1 |
| 28 | 022750002- - W | Presser regulating thumb nut | 1 | 1 | 1 |
| 29 | 158340001 | Bevel gear for hook shaft | 1 | 1 | 1 |
| 30 | 022301N | Bevel gear for arm shaft | 1 | 1 | 1 |
| 31 | 022302N | Bevel gear for vertical shaft (upper) | 2 | 2 | 2 |
| 32 | 022220003 | Screw | 8 | 8 | 8 |
| 33 | 022300111 | Vertical shaft bushing (upper) | 1 | 1 | 1 |
| 34 | 020300007 | Screw | 2 | 2 | 2 |
| 35 | 022710001 | Presser foot lifter | 1 | 1 | 1 |
| 36 | B040600294 | Screw | 1 | 1 | 1 |
| 37 | 022700002 | Presser foot cam | 1 | 1 | 1 |
| 38 | S150651010 | Oil seal for presser foot cam | 1 | 1 | 1 |
| 39 | 022721001 | Knee lifter lever (left) | 1 | 1 | 1 |
| 40 | 022720002 | Hinge screw | 2 | 2 | 2 |
| 41 | 022720003 | Knee lifter lever | 1 | 1 | 1 |
| 42 | 158310001 | Knee lifter lever (right) | 1 | 1 | 1 |
| 43 | 022730002 | Spring for knee lifter lever (right) | 1 | 1 | 1 |
| 44 | 022730004 | Screw for knee lifter lever (right) | 1 | 1 | 1 |
| 45 | 022730003 | Knee lifter lever | 1 | 1 | 1 |
| 46 | 022700008 | Spring pin | 1 | 1 | 1 |
| 47 | 022700015 | Screw | 1 | 1 | 1 |
| 48 | 158320100 | Presser foot assy (2mm) | 1 | | |
| | 158B11000 | Presser foot assy (3.2) | 1 | | |
| | 158B21000 | Presser foot assy (4.0) | 1 | | |
| | 158B31000 | Presser foot assy (4.8) | 1 | | |
| | 158B41000 | Presser foot assy (5.6) | 1 | | |
| | 158B51000 | Presser foot assy (7.9) | 1 | | |
| | 158B61000 | Presser foot assy (9.5) | 1 | | |
| | 158B71000 | Presser foot assy (12.7) | 1 | | |
| | 158910000 | Presser foot assy | | 1 | |
| | 158A10000 | Presser foot assy | | | 1 |
| 49 | 158331000 | Lower shaft oil seal | 1 | 1 | 1 |
| 50 | 158330001 | Seal cover for hook shaft | 1 | 1 | 1 |

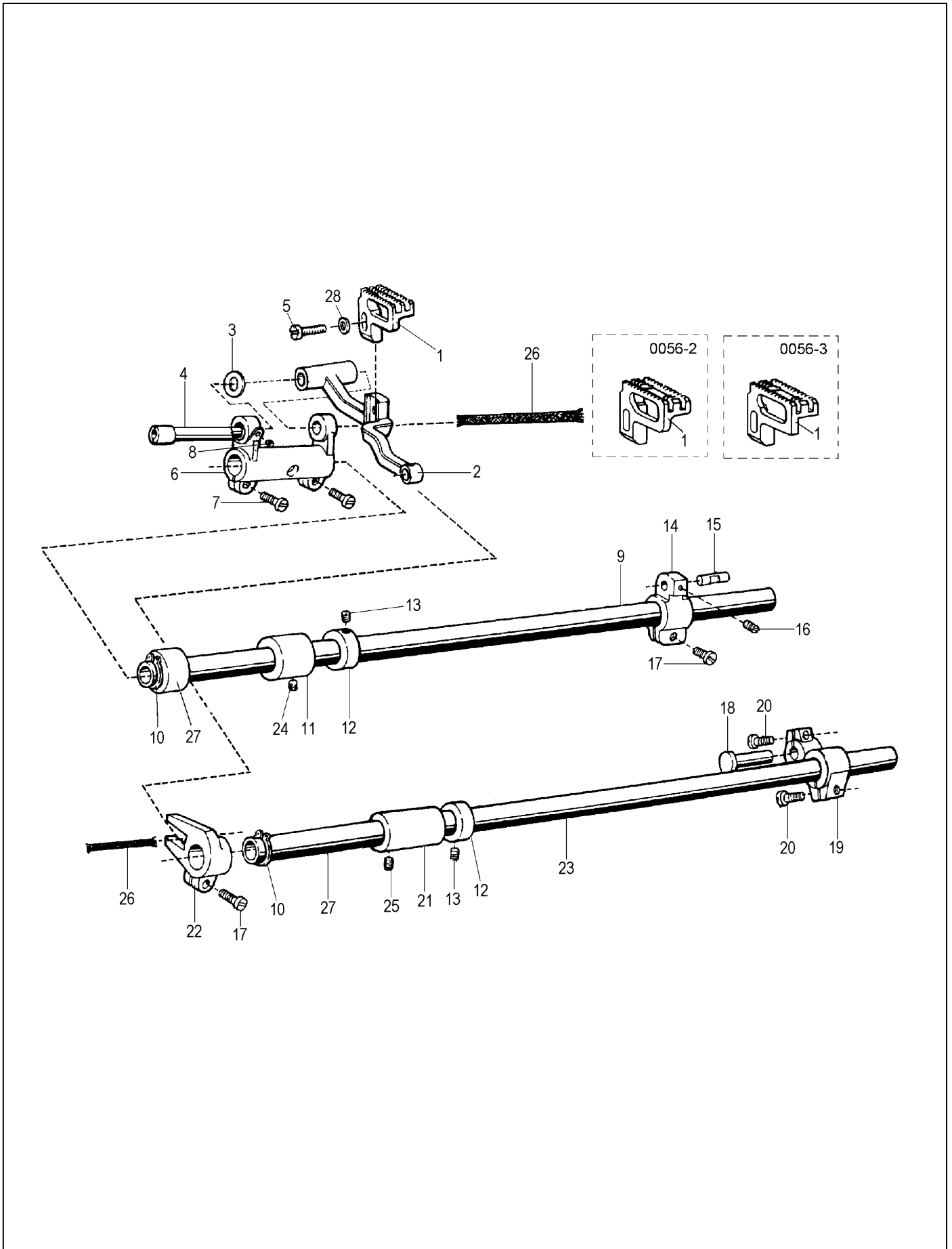
5. STITCH LENGTH REGULATING MECHANISM



5. STITCH LENGTH REGULATING MECHANISM

| No. | Ref.No. | Description | Qt. | | |
|-----|----------------|----------------------------|-----|-----|-----|
| | | | - 1 | - 2 | - 3 |
| 1 | 036500001 | Connecting stud | 1 | 1 | 1 |
| 2 | 057500001 | Feed regulator | 1 | 1 | 1 |
| 3 | 036550008 | Screw | 1 | 1 | 1 |
| 4 | 036550009 | Lever link eccentric shaft | 1 | 1 | 1 |
| 5 | 036550010 | Lever regulator | 1 | 1 | 1 |
| 6 | 036580002 | Pin (left) | 1 | 1 | 1 |
| 7 | 022640003 | Screw | 1 | 1 | 1 |
| 8 | 036580001 | Pin (right) | 1 | 1 | 1 |
| 9 | 022640003 | Screw | 1 | 1 | 1 |
| 10 | 022510004 | Screw of feed regulator | 1 | 1 | 1 |
| 11 | 022640003 | Screw | 1 | 1 | 1 |
| 12 | 022500003 | Feed regulator bushing | 1 | 1 | 1 |
| 13 | 022500004 | Feed regulator shaft | 1 | 1 | 1 |
| 14 | 036500003 | Rubber plug (φ 20) | 1 | 1 | 1 |
| 15 | 020300007 | Set screw | 1 | 1 | 1 |
| 16 | 022550001 | Back tacking crank | 1 | 1 | 1 |
| 17 | 022551001 | Slide block pin | 1 | 1 | 1 |
| 18 | 057520001 | Lever spring | 1 | 1 | 1 |
| 19 | 022500013 | Screw | 1 | 1 | 1 |
| 20 | 158400002 | Bracket for spring | 1 | 1 | 1 |
| 21 | 036550007 | Screw | 1 | 1 | 1 |
| 22 | 124500004- - W | Backtacking lever | 1 | 1 | 1 |
| 23 | 036531001 | Backtacking lever shaft | 1 | 1 | 1 |
| 24 | S150651007 | O- ring | 1 | 1 | 1 |
| 25 | 022540003 | Screw | 1 | 1 | 1 |
| 26 | 022540004 | Screw | 2 | 2 | 2 |
| 27 | 022500011 | Washer | 1 | 1 | 1 |
| 28 | 124510002 | Feed regulator screw | 1 | 1 | 1 |
| 29 | 124510003 | O- ring | 1 | 1 | 1 |
| 30 | 124510001- - W | Needle pitch knob | 1 | 1 | |
| | 124520001 | Needle pitch knob | | | 1 |
| 31 | 036558001 | Feed rock link | 1 | 1 | 1 |
| 32 | 036550006 | Pin | 1 | 1 | 1 |
| 33 | 036540005 | Screw | 1 | 1 | 1 |
| 34 | 022500008 | Stopper pin | 1 | 1 | 1 |
| 35 | 022500009 | Spring for stopper pin | 1 | 1 | 1 |
| 36 | 036550002 | Lever feed connecting rod | 1 | 1 | 1 |
| 37 | 036550003 | Feed regulator link | 1 | 1 | 1 |
| 38 | 036400104 | Sink shaft | 1 | 1 | 1 |
| 39 | 036558002 | Feed rock arm link | 2 | 2 | 2 |
| 40 | 036550005 | Screw | 1 | 1 | 1 |
| 41 | 022551002 | Crank slide block | 1 | 1 | 1 |
| 42 | 036540004 | Bush for screw | 1 | 1 | 1 |

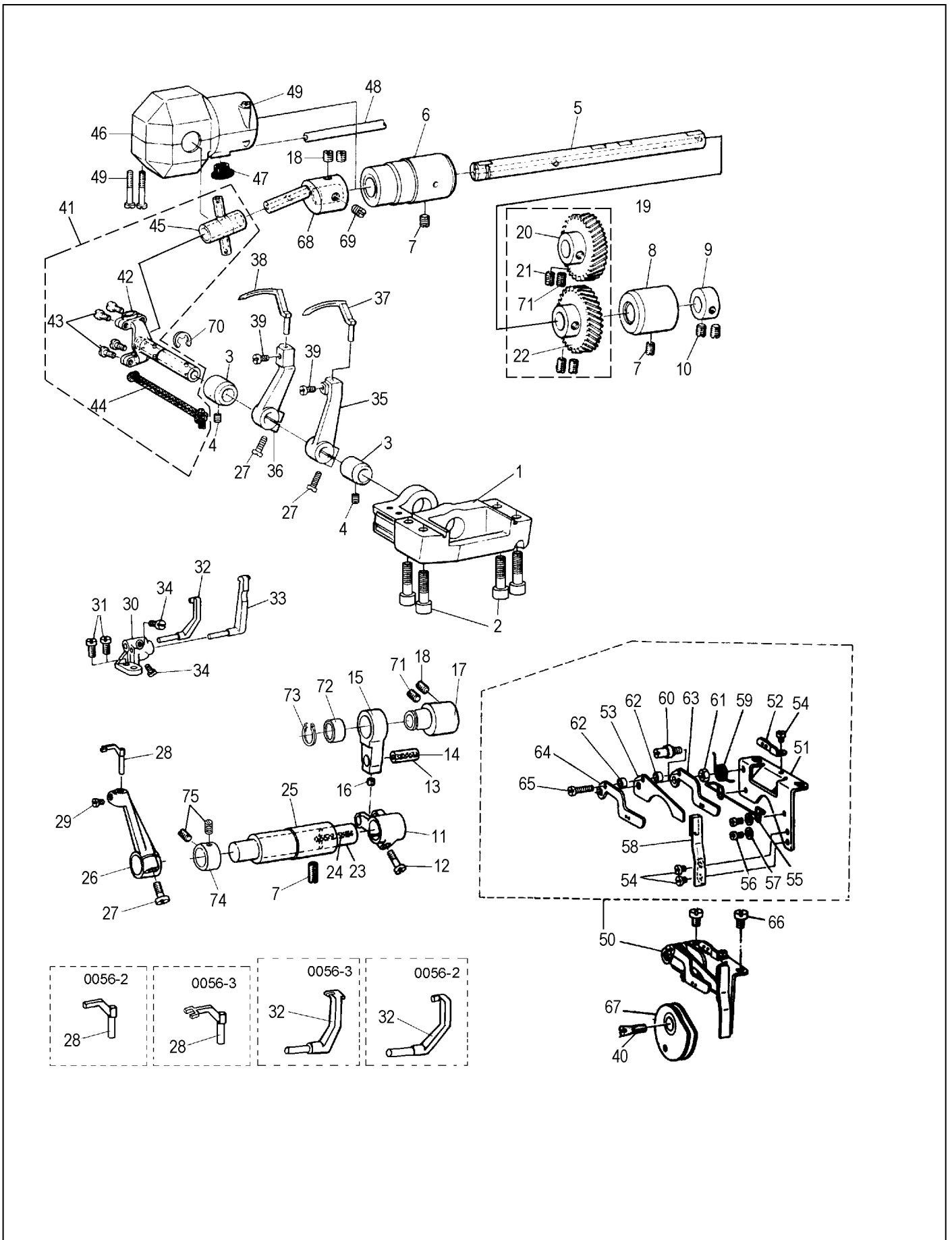
6. FEEDING AND FEED LIFTING MECHANISM



6. FEEDING AND FEED LIFTING MECHANISM

| No. | Ref.No. | Description | Qt. | | |
|-----|------------|--------------------------------|-----|-----|-----|
| | | | - 1 | - 2 | - 3 |
| 1 | 158510001 | Feed dog (6.4 5.6) | 1 | | |
| | 158B10004 | Feed dog (3.2 4.0) | 1 | | |
| | 158B30003 | Feed dog (4.8) | 1 | | |
| | 158B50004 | Feed dog (7.9) | 1 | | |
| | 158B60003 | Feed dog (9.5) | 1 | | |
| | 158B70004 | Feed dog (12.7) | 1 | | |
| | 158900002 | Feed dog | | 1 | |
| | 158A00002 | Feed dog | | | 1 |
| 2 | 158511001 | Feed bar | 1 | 1 | 1 |
| 3 | 022610006 | Washer | 1 | 1 | 1 |
| 4 | 158511002 | Feed bracket shaft | 1 | 1 | 1 |
| 5 | S150202013 | Screw | 1 | 1 | 1 |
| 6 | 022611001 | Feed rock bracket | 1 | 1 | 1 |
| 7 | 158500006 | Screw | 2 | 2 | 2 |
| 8 | 022200019 | Screw | 1 | 1 | 1 |
| 9 | 158500001 | Feed rock shaft | 1 | 1 | 1 |
| 10 | S150617006 | Split washer | 2 | 2 | 2 |
| 11 | 022600004 | Feed rock shaft bushing | 1 | 1 | 1 |
| 12 | 022620001 | Collar | 2 | 2 | 2 |
| 13 | 006200021 | Screw | 4 | 4 | 4 |
| 14 | 036400003 | Feed rock shaft crank (right) | 1 | 1 | 1 |
| 15 | 036400204 | Pin | 1 | 1 | 1 |
| 16 | 036550005 | Screw | 1 | 1 | 1 |
| 17 | 022640003 | Screw | 2 | 2 | 2 |
| 18 | 022600007 | Hinge pin | 1 | 1 | 1 |
| 19 | 036400017 | Feed lifting crank (right) | 1 | 1 | 1 |
| 20 | 022600016 | Screw | 2 | 2 | 2 |
| 21 | 158500004 | Bushing | 1 | 1 | 1 |
| 22 | 036484001 | Forked feed lifting | 1 | 1 | 1 |
| 23 | 158500003 | Feed lifting rock shaft | 1 | 1 | 1 |
| 24 | 022200009 | Screw | 1 | 1 | 1 |
| 25 | 022200002 | Set screw | 1 | 1 | 1 |
| 26 | | Oil wick | 1 | 1 | 1 |
| 27 | 158500005 | Feed rock shaft bushing (left) | 1 | 1 | 1 |
| 28 | 022100007 | Washer | 1 | 1 | 1 |

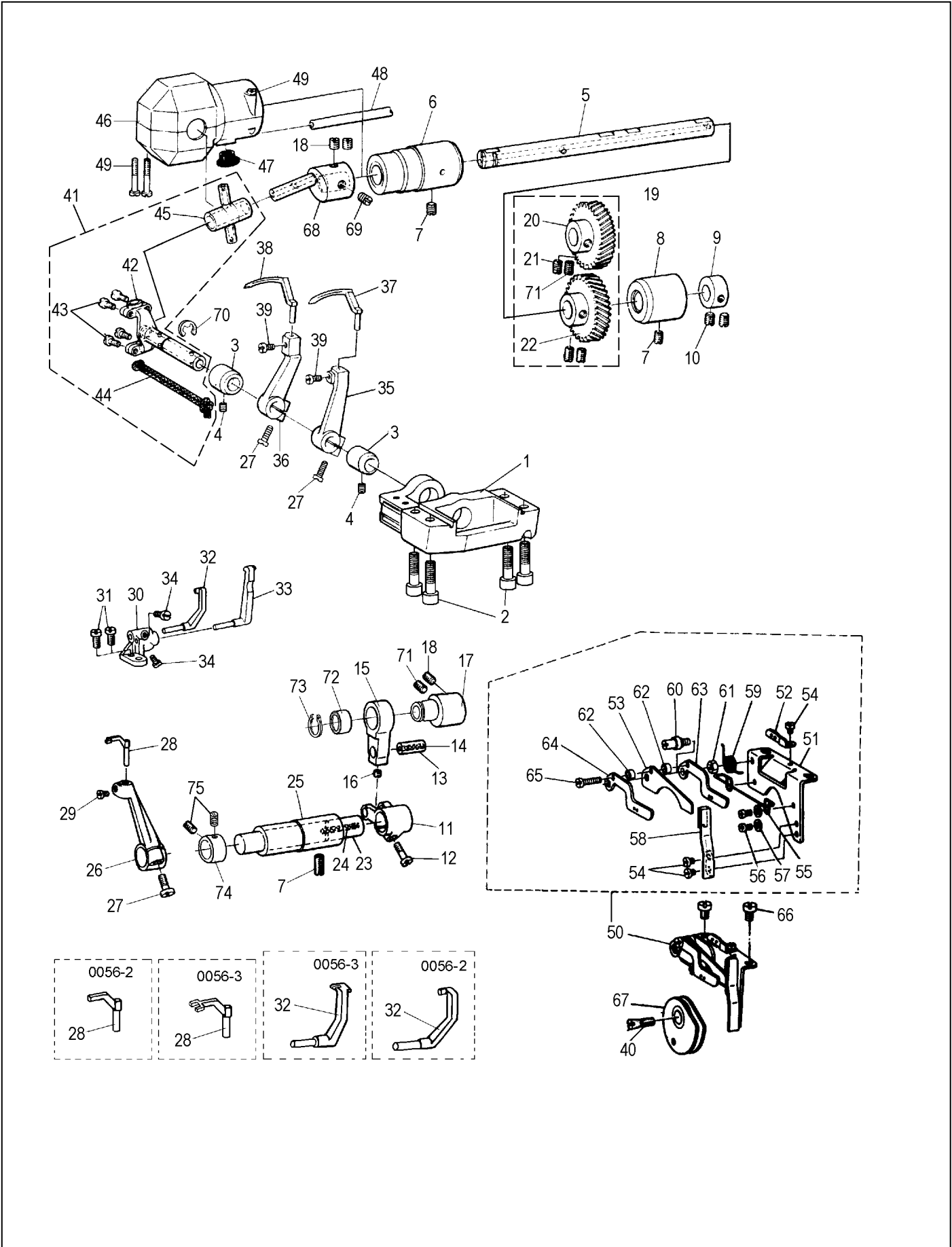
7. LOOPER MECHANISM (1)



7. LOOPER MECHANISM (1)

| No. | Ref.No. | Description | Qt. | | |
|-----|------------|--|-----|------|-----|
| | | | - 1 | - 2 | - 3 |
| 1 | 158600001 | Looper holder | 1 | 1 | 1 |
| 2 | S150209058 | Screw M6×20 | 4 | 4 | 4 |
| 3 | 158600002 | Bushing | 2 | 2 | 2 |
| 4 | 022100011 | Screw | 2 | 2 | 2 |
| 5 | 158600003 | Looper shaft | 1 | 1 | 1 |
| 6 | 158600004 | Looper shaft bushing(front) | 1 | 1 | 1 |
| 7 | 022200002 | Screw | 3 | 3 | 3 |
| 8 | 158300006 | Looper shaft bushing(rear) | 1 | 1 | 1 |
| 9 | 158300005 | Collar | 1 | 1 | 1 |
| 10 | 022220003 | Screw | 2 | 2 | 2 |
| 11 | 158600005 | Forked protecting crank | 1 | 1 | 1 |
| 12 | 022640003 | Screw | 1 | 1 | 1 |
| 13 | 158600006 | Pin | 1 | 1 | 1 |
| 14 | | Yarnφ 3×35 | 1 | 1 | 1 |
| 15 | 158600007 | Protecting crank | 1 | 1 | 1 |
| 16 | 028700004 | Screw | 1 | 1 | 1 |
| 17 | 158600008 | Thread guard cam | 1 | 1 | 1 |
| 18 | 058211002 | Screw | 3 | 3 | 3 |
| 19 | 158670000 | Rotation gear assy | 1 | 1 | 1 |
| 20 | 158600009 | Right rotation gear | 1 | 1 | 1 |
| 21 | 058211002 | Screw | 3 | 3 | 3 |
| 22 | 158600010 | Left rotation gear | 1 | 1 | 1 |
| 23 | 158600011 | Protecting shaft | 1 | 1 | 1 |
| 24 | | Yarnφ 4×200 | 1 | 1 | 1 |
| 25 | 158600012 | Bushing | 1 | 1 | 1 |
| 26 | 158600013 | Driving thread guard frame | 1 | 1 | 1 |
| 27 | S150299002 | Screw | 3 | 3(2) | 3 |
| 28 | 158600014 | Driving thread guard bar (6.4 5.6) | 1 | | |
| | 158B10002 | Driving thread guard bar (3.2 4.0 4.8) | 1 | | |
| | 158B50002 | Driving thread guard bar (7.9 9.5) | 1 | | |
| | 158B70002 | Driving thread guard bar (12.7) | 1 | | |
| | 158A00004 | Driving thread guard bar | | | 1 |
| | 158900003 | Driving thread guard bar | | 2 | |
| 29 | 036550007 | Screw | 1 | 1 | 1 |
| 30 | 158600015 | Thread guard plate | 1 | 1 | 1 |
| 31 | 0585A0003 | Screw | 2 | 2 | 2 |
| 32 | 158600016 | Left thread guard bar | 1 | | |
| | 158900004 | Fixed thread guard bar | | 1 | |
| | 158A00005 | Fixed thread guard bar | | | 1 |
| 33 | 158600017 | Right thread guard bar | 1 | | |
| 34 | B994787009 | Screw | 2 | 1 | 1 |

7. LOOPER MECHANISM (2)



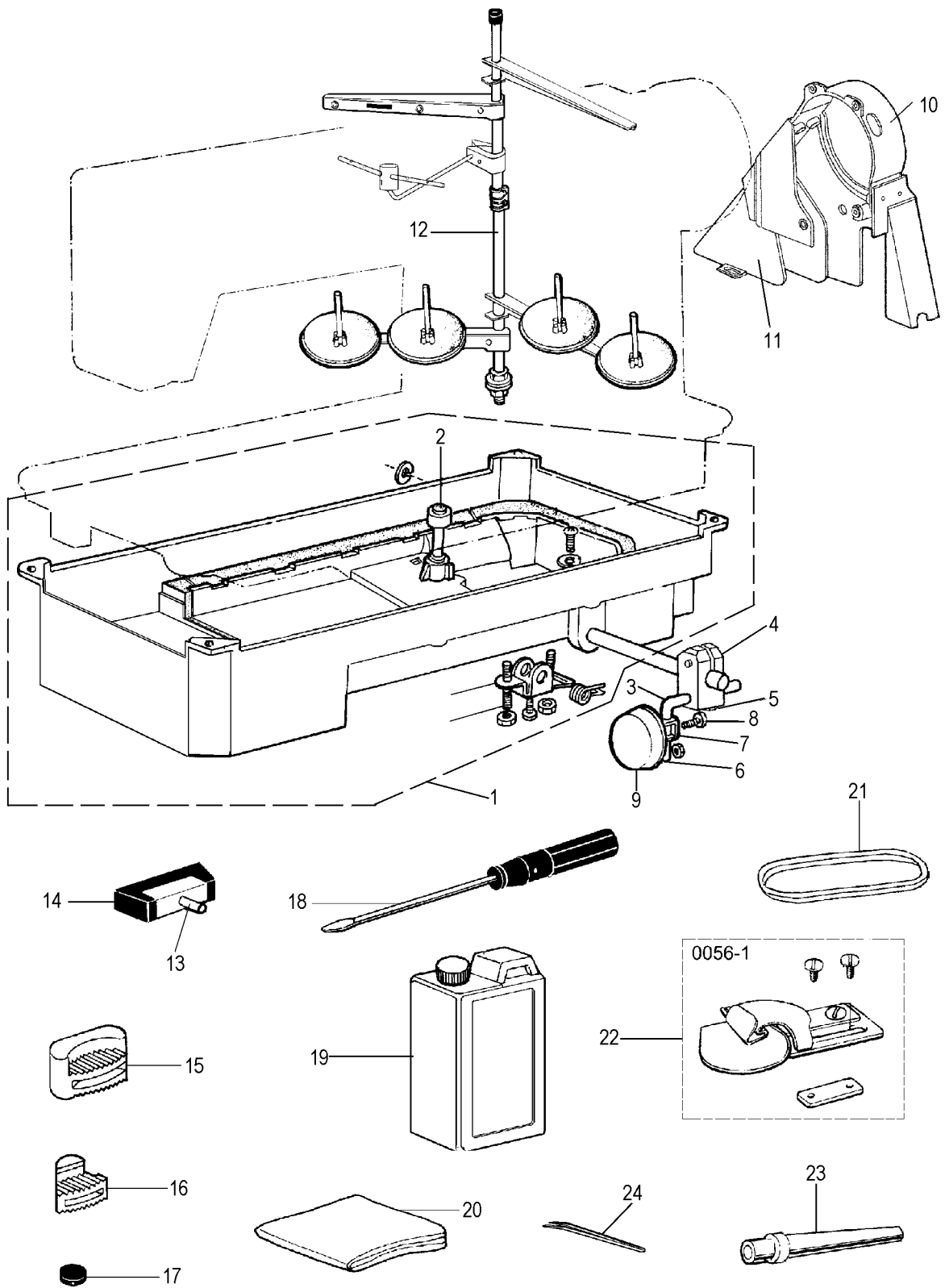
7. LOOPER MECHANISM (2)

| No. | Ref.No. | Description | Qt. | | |
|-----|--------------|---------------------------------|-----|-----|-----|
| | | | - 1 | - 2 | - 3 |
| 35 | 158600018 | Left looper holder | 1 | 1 | 1 |
| 36 | 15800019 | Right looper holder | 1 | | 1 |
| 37 | 158600020 | Left looper | 1 | 1 | 1 |
| 38 | 158600021 | Right looper | 1 | | 1 |
| 39 | B994787009 | Screw of looper | 2 | 1 | 2 |
| 40 | 158600022 | Screw | 1 | 1 | 1 |
| 41 | 158610000 | Cross joint assy | 1 | 1 | 1 |
| 42 | 158611001 | Looper rocker shaft | 1 | 1 | 1 |
| 43 | 028200056 | Screw | 4 | 4 | 4 |
| 44 | | Yarn ϕ 4 \times 140 | 1 | 1 | 1 |
| 45 | 158612000 | Cross assy | 1 | 1 | 1 |
| 46 | 158630000 | Looper crank cover assy | 1 | 1 | 1 |
| 47 | 022130004- V | Rubber plug | 1 | 1 | 1 |
| 48 | 158630003 | Oil pipe ϕ 3/5 \times 82 | 1 | 1 | 1 |
| 49 | 158630004 | Screw | 3 | 3 | 3 |
| 50 | 158640000 | Thread take- up cam assy | 1 | 1 | 1 |
| 51 | 158640001 | Thread take- up cam | 1 | 1 | 1 |
| 52 | 158640002 | Thread guide plate (S) | 1 | 1 | 1 |
| 53 | 158640003 | Thread guide bracket | 1 | 1 | 1 |
| 54 | 158160002 | Screw | 3 | 3 | 3 |
| 55 | 158640004 | Thread guide spring | 1 | 1 | 1 |
| 56 | 028400068 | Screw | 2 | 2 | 2 |
| 57 | S150607007 | Washer 3A | 2 | 2 | 2 |
| 58 | 158640005 | Screw for cam holder | 1 | 1 | 1 |
| 59 | 158640006 | Screw for cam holder | 1 | 1 | 1 |
| 60 | 158640007 | Screw | 1 | 1 | 1 |
| 61 | 158640008 | Nut | 1 | 1 | 1 |
| 62 | 158640009 | Washer | 2 | 2 | 2 |
| 63 | 158640010 | Right thread guide plate | 1 | 1 | 1 |
| 64 | 158640011 | Left thread guide plate | 1 | 1 | 1 |
| 65 | 022800004 | Screw | 1 | 1 | 1 |
| 66 | 022200004 | Screw | 2 | 2 | 2 |
| 67 | 158650000 | Cam holder assy | 1 | 1 | 1 |
| 68 | 158660001 | Looper crank assy | 1 | 1 | 1 |
| 69 | 158660002 | Eccentric screw | 1 | 1 | 1 |
| 70 | 158600025 | Thrust collar | 1 | 1 | 1 |
| 71 | B900859009 | Screw | 2 | 2 | 2 |
| 72 | S150801032 | Needle bearing | 1 | 1 | 1 |
| 73 | S150617003 | Retaining ring (GB894.1- 86) | 1 | 1 | 1 |
| 74 | 158600026 | Collar | 1 | 1 | 1 |
| 75 | 022220003 | Screw | 2 | 2 | 2 |

8. LUBRICATION MECHANISM

| No. | Ref.No. | Description | Qt. | | |
|-----|------------|-------------------------------------|-----|-----|-----|
| | | | - 1 | - 2 | - 3 |
| 1 | 158700004 | Oil pump body | 1 | 1 | 1 |
| 2 | 022800002 | Oil pump impeller | 1 | 1 | 1 |
| 3 | 022800003 | Screw | 1 | 1 | 1 |
| 4 | 022800004 | Screw | 3 | 3 | 3 |
| 5 | S150601003 | Spring washer | 1 | 1 | 1 |
| 6 | 158700005 | Oil pump filting plate | 1 | 1 | 1 |
| 7 | 158700007 | Oil adjusting plate | 1 | 1 | 1 |
| 8 | 158730000 | Oil pump screen assy | 1 | 1 | 1 |
| 9 | 158700006 | Screw | 3 | 3 | 3 |
| 10 | 158710000 | Oil pipe for hook shaft assy | 1 | 1 | 1 |
| 11 | 022831 | Oil braid filting plate assy | 1 | 1 | 1 |
| 12 | 022700015 | Screw | 2 | 2 | 2 |
| 13 | 158720000 | Oil pipe for arm shaft assy | 1 | 1 | 1 |
| 14 | 022850000 | Filter felt for returning pipe assy | 1 | 1 | 1 |
| 15 | 022800015 | Filter felt for returning pipe | 1 | 1 | 1 |
| 16 | 036A00002 | Spring for oil felt | 1 | 1 | 1 |
| 17 | 158700001 | Oil pipe connecting | 1 | 1 | 1 |
| 18 | 158700003 | Oil pump body cushion | 3 | 3 | 3 |

9. OIL RESERVOIR AND OTHER ACCESSORIES



9. OIL RESERVOIR AND OTHER ACCESSORIES

| No. | Ref.No. | Description | Qt. | | |
|-----|----------------|-------------------------------|-----|-----|-----|
| | | | - 1 | - 2 | - 3 |
| 1 | 158810000 | Oil reservoir assy | 1 | 1 | 1 |
| 2 | 158810005 | Knee lifter lifting rod | 1 | 1 | 1 |
| 3 | W210105018 | Knee lifter plate crank | 1 | 1 | 1 |
| 4 | W210105029 | Knee lifter plate crank joint | 1 | 1 | 1 |
| 5 | S150106005 | Screw | 2 | 2 | 2 |
| 6 | 022920009 | Knee lifter plate crank joint | 1 | 1 | 1 |
| 7 | W210105004 | Bracket for knee lifter plate | 1 | 1 | 1 |
| 8 | S150106003 | Screw | 1 | 1 | 1 |
| 9 | W210105006- V | Gasket for knee lifter plate | 1 | 1 | 1 |
| 10 | 124920005- - W | Belt cover (big) | 1 | 1 | 1 |
| 11 | 124920001- - W | Belt cover (small) | 1 | 1 | 1 |
| 12 | 088900101- - W | Spool stand assy | 1 | | 1 |
| | 006F00030- - W | Spool stand assy | | 1 | |
| 13 | 02299 | Hinge of machine head | 2 | 2 | 2 |
| 14 | 022960002- - V | Hinge socket of machine head | 2 | 2 | 2 |
| 15 | 022900009- - V | Rubber cap (big) | 2 | 2 | 2 |
| 16 | 022900010- - V | Rubber cap (small) | 2 | 2 | 2 |
| 17 | W060401014 | Magnet | 1 | 1 | 1 |
| 18 | W060401017 | Screw driver | 1 | 1 | 1 |
| 19 | W060302087 | Oil can | 1 | 1 | 1 |
| 20 | W060302058 | Machine head cover | 1 | 1 | 1 |
| 21 | S151102004 | Triangular belt | 1 | 1 | 1 |
| 22 | 158820001 | 1/4" folder assy | 1 | | |
| | 158B12000 | 1/8" folder assy | 1 | | |
| | 158B22000 | 5/32" folder assy | 1 | | |
| | 158B32000 | 3/16" folder assy | 1 | | |
| | 158B42000 | 7/32" folder assy | 1 | | |
| | 158B52000 | 5/16" folder assy | 1 | | |
| | 158B62000 | 3/8" folder assy | 1 | | |
| 23 | 022900040- - W | Head support | 1 | 1 | 1 |
| 24 | W060401013 | Tweezer | 1 | 1 | 1 |

- Besides adjusting stitch, please laypeople don't debug or maintain.
- Parts are subject to changes in design without prior notice.

XI'AN TYPICAL INDUSTRIES CO.,LTD.

Add: No. 335 Taibai South Road,
Xi'an, P.R. China-710068
Tel: +86-29-88279091 88279150
Fax: +86-29-88249715 88245215
E-mail: typical@chinatypical.com
[Http://www.chinatypical.com](http://www.chinatypical.com)
[Http://www.chinatypical.com](http://www.chinatypical.com)